

# Aipak Vacuum mixing emulsifier



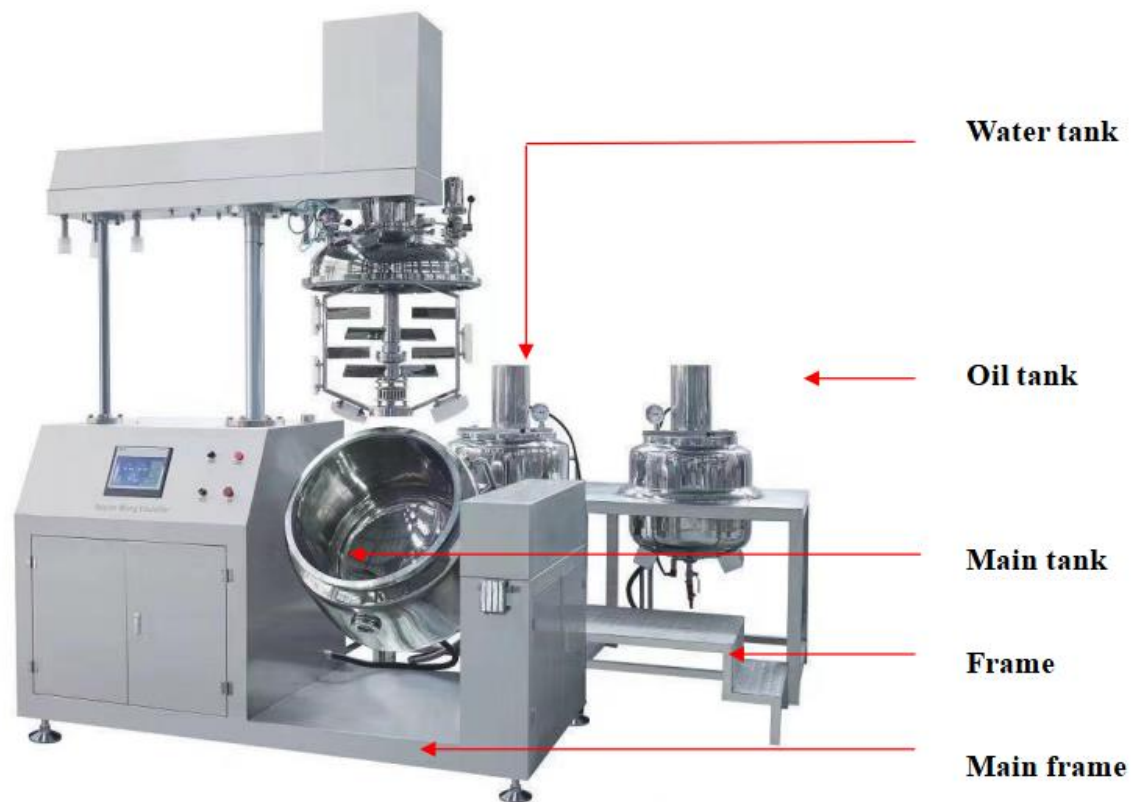
**Purpose:** The equipment is suitable for emulsification of the pharmaceutical, Cosmetic, fine chemical products, especially the material having high matrix viscosity and solid content. Such as cosmetic, cream, ointment, detergent, salad, sauce, lotion, shampoo, toothpaste and so on

**Structure:** including main emulsifying pot, water pot ,oil pot and work frame.

1 Usually the oil pot is used for dissolving some solid that the product can just only be dissolved into oil, then the dissolved solvent will be sucked into the emulsify pot by soft pipes.

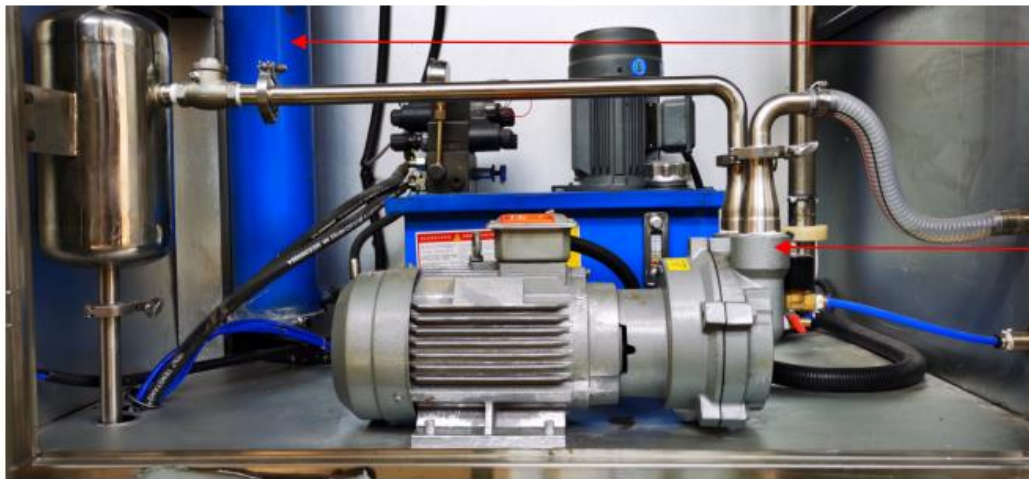
2 The function of water pot is the same to the oil pot.

3 emulsify pot is used for emulsifying the products that suck from the oil pot and water pot.



Main frame: including emulsify pot, lifting system, discharge system, vacuum system, electric control system, rotate system, mixing system.

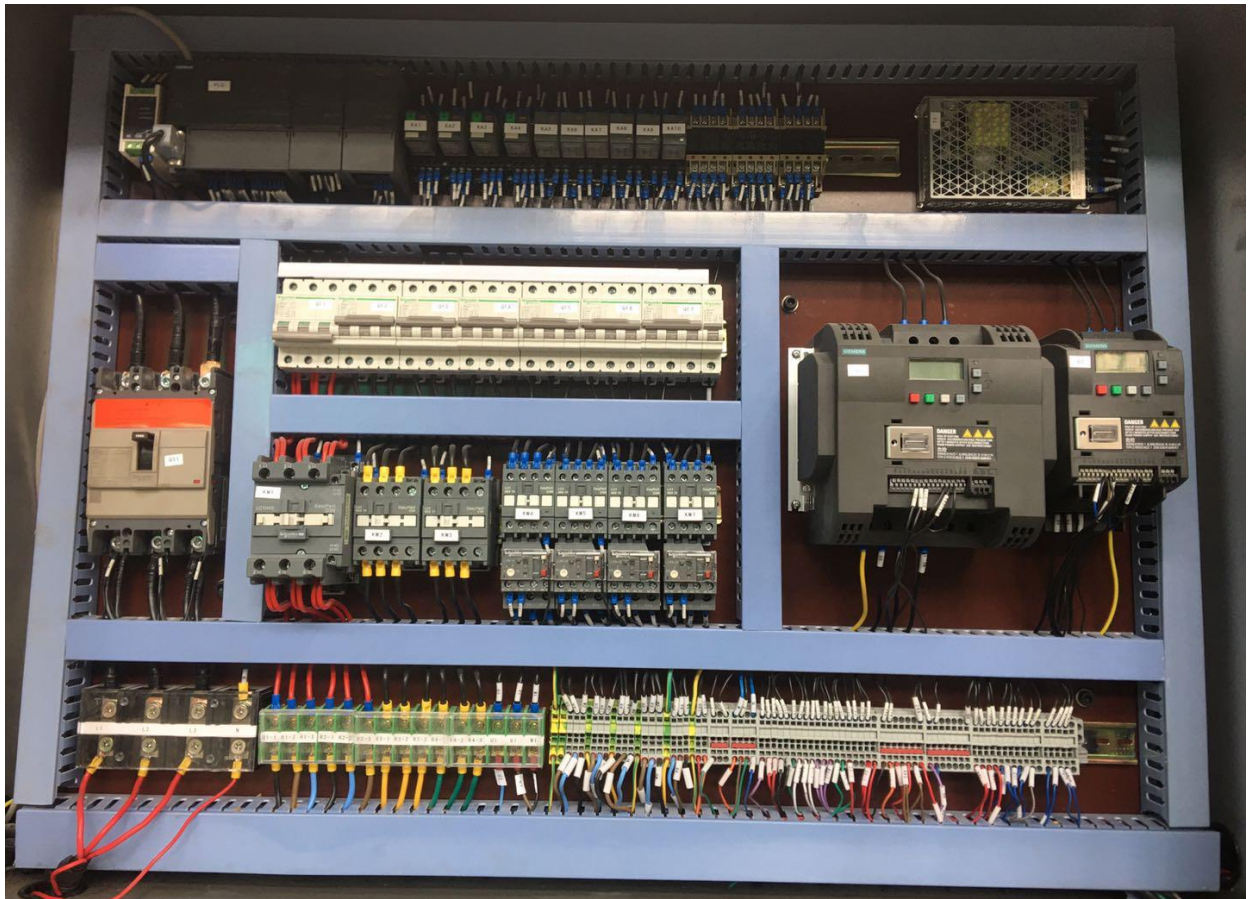
**Vacuum pump** is connected by two soft pipes, one is connected the water tank by soft pipe which is used for sealing when the pump is operating; the other connected to main emulsify pot through pipes and gas—liquid separator, so that the pump can make the main emulsify pot under vacuum condition. The gas—liquid separator is separating the gas and water, because the steam is sucked into vacuum pump when it is working, the steam through gas---water separator, some of steam become into water which flow out at the bottom of the separator.



Lifter

Vacuum pump

### Electric control system



The vertical motor is high speed motor which can rotate between 0—3500 rmp/min

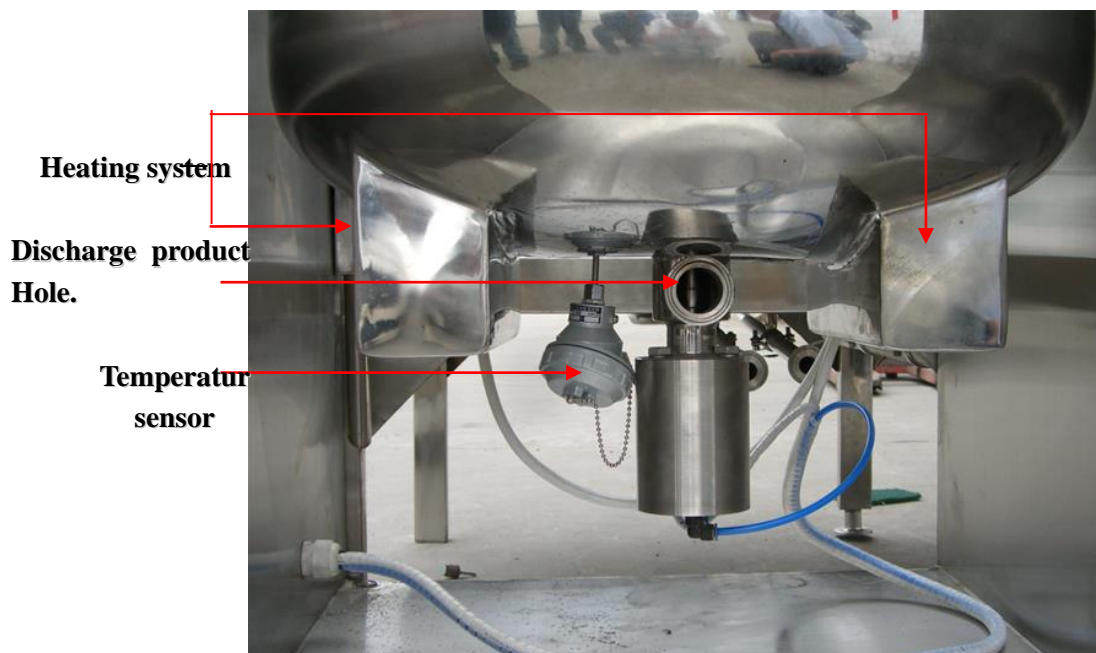




**You can demolition the motor by open the screws and one wire.**

**Mixer:** it include low speed mixer and high speedy mixer (homogenizer)

**a)** Emulsifying pot: including cover, pot, bottom valve, temperature sensor, heating system.



This machine is heated by electricity, you just fill water into jacket, then turn on the heating system, the water is heated by electricity according to your requirement.

2 this machine also can be heated by steam, you just connect to steam producer when you heat the machine by steam.

**Discharge hole:** it is used for discharging the product just open the valve by pressed air.

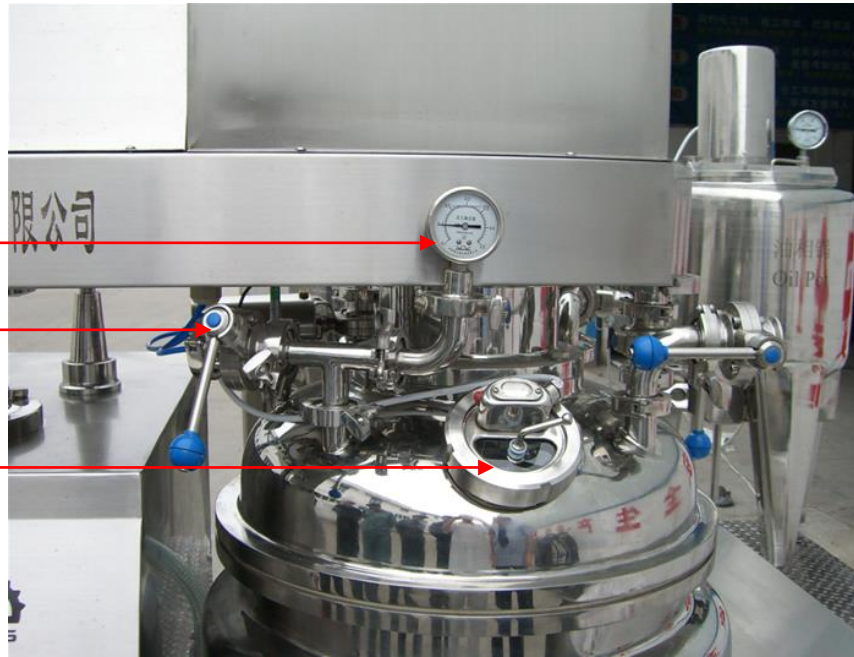
**Temperature sensor:** it is used for check the temperature the product inside pot

**Accessories on the cover:** including vacuum protection system, pressed air inlet hole, negative and plus pressure meter, mirror, CIP that for washing, break vacuum hole, material inlet hole, prepare hole for inlet perfume, automatic control vacuum valve and so on.

**Negative  
Pressure  
meter**

**Pressed  
Inlet hole**

**mirro**



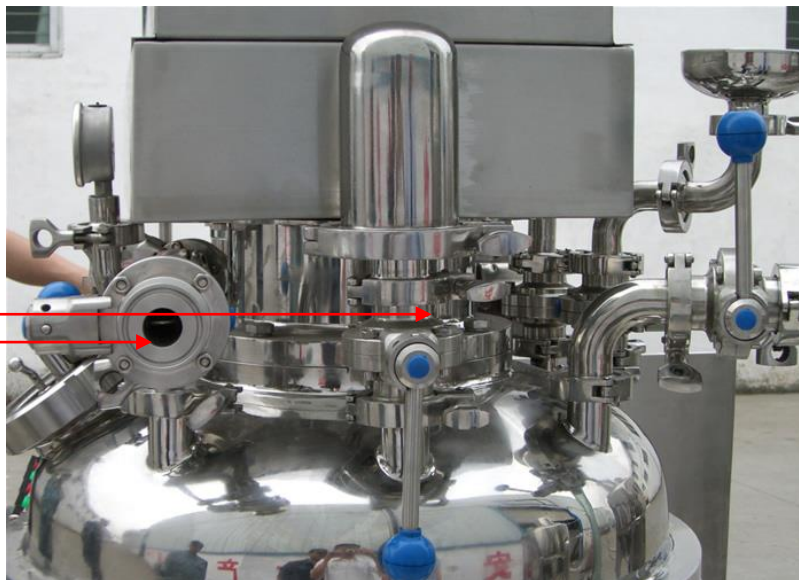
**Negative pressure meter** is used for check the pressure inside pot.

**Pressed air inlet hole:** it is connected with Air Compressor by blue soft pipe. it can press the product by air when the product is finished so that the product will be discharged under the plus pressure.

**Mirror:** you can see inside pot by turning on the light

**Break vacuum**

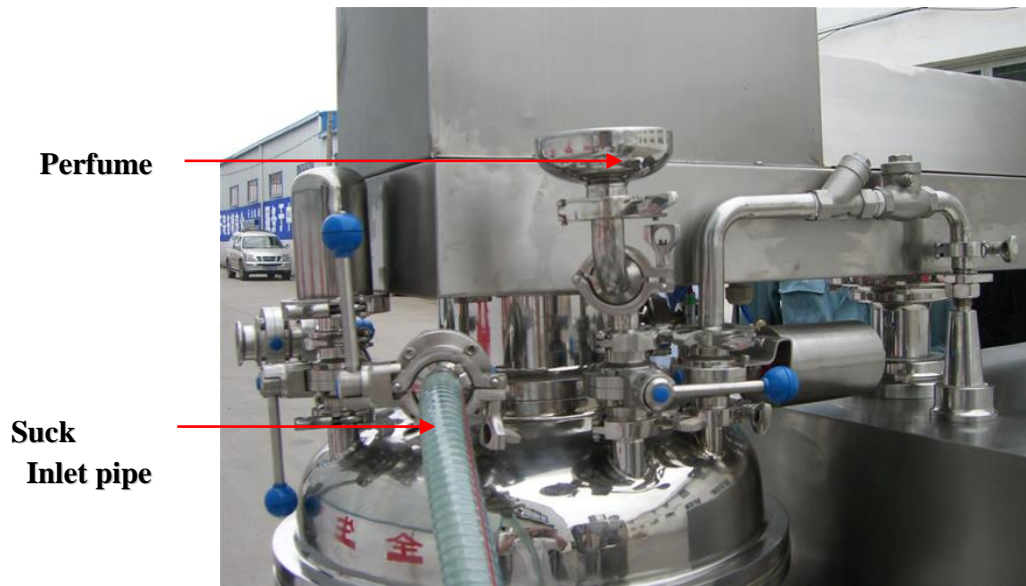
**CIP that  
machine**



**Break vacuum hole:** it can break the vacuum inside pot by turning the valve, there is air filter inside valve.

The product can not be discharged under vacuum condition, it just can be discharged without vacuum.

**CIP:** it is used for cleaning the inside pot by connecting tap water



**Perfume inlet:** it is prepare hole for put perfume into the pot.

**Suck product inlet pipe:** it is used for sucking product from the oil pot and water pot.

You also can suck the product from oil pot and water pot to emulsify pot by vacuum through the stainless steel pipe.

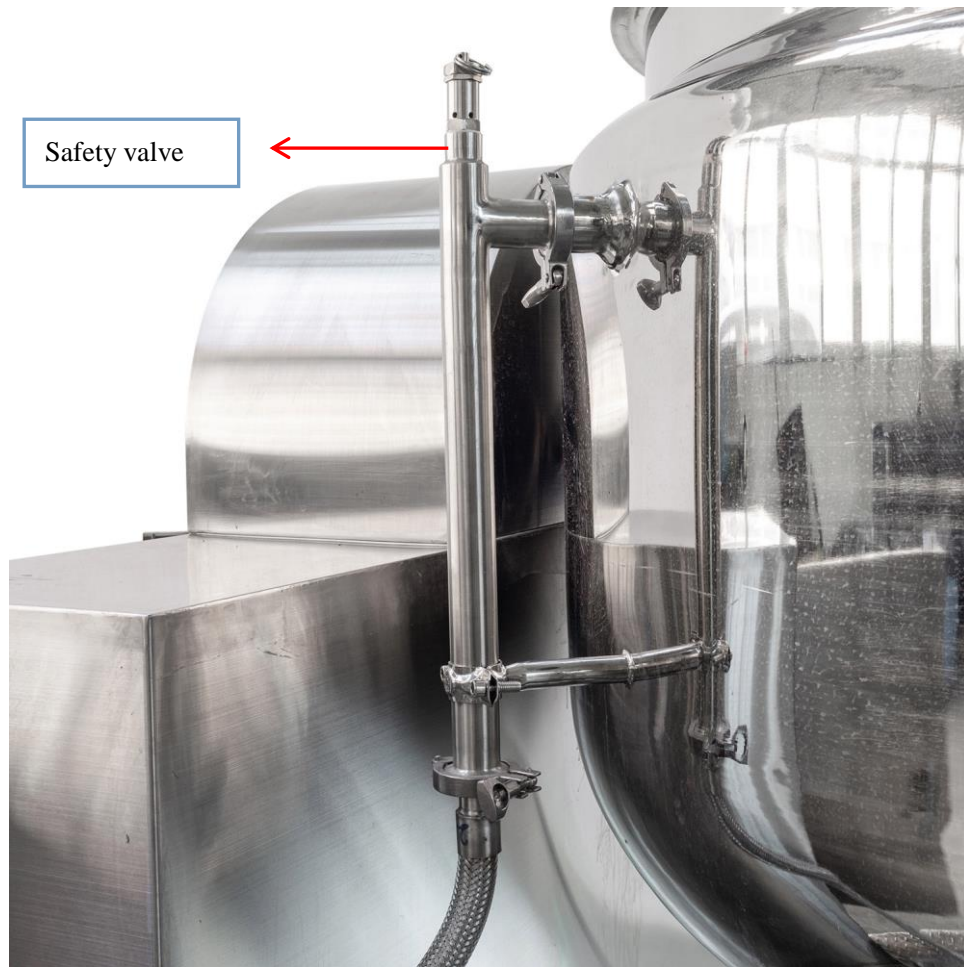
**This vacuum protection switch is designed so that the cover can not be lifted when it is vacuum inside pot.**



**Vacuum protection switch**

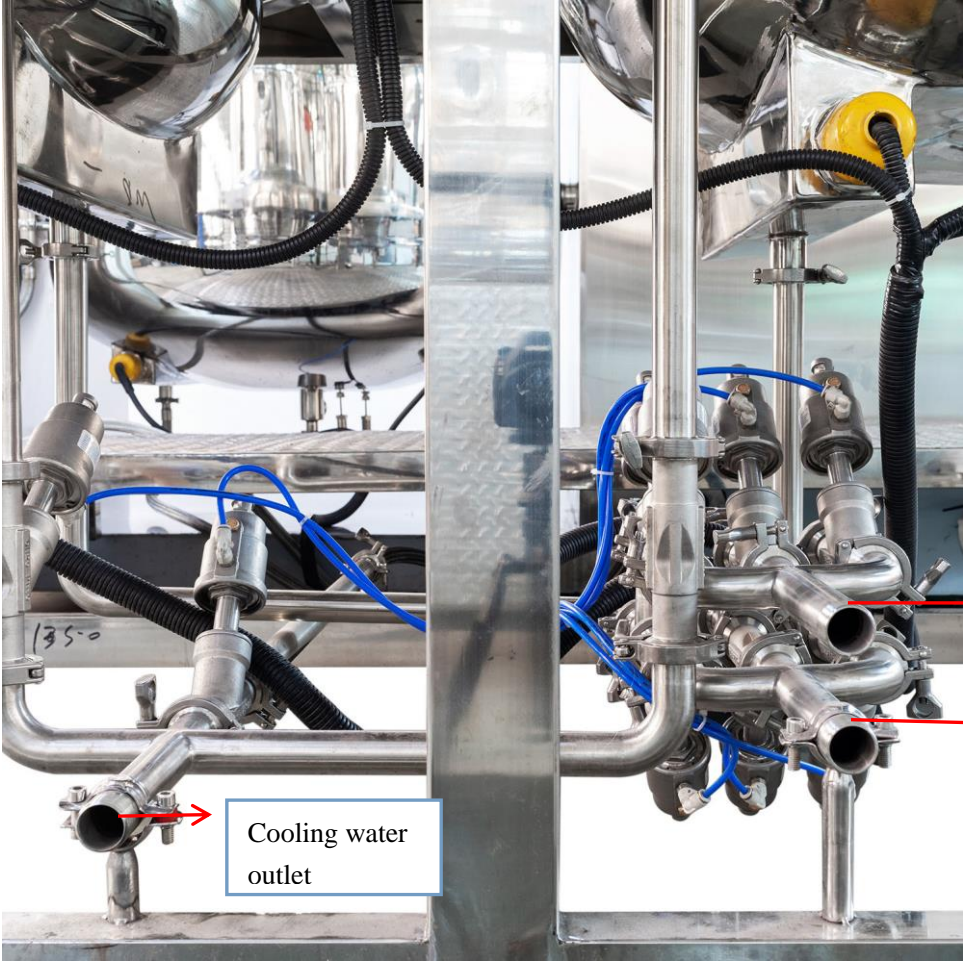
Safety system:





Water inlet system and cooling system





Cooling water outlet

Water inlet

Discharge water

### Parameter

Model	Volume	Emulsify motor		Mixer of oil water pot		Length	width	height	Max height
APKZRJ-10	10L	1.1KW	0-3500rpm/min	0.37Kw	0-60r/m	1200	600	1300	1700
APKZRJ -20	20L	1.5KW	0-3500rpm/min	0.75Kw	0-60r/m	1500	800	1500	2050
APKZRJ -50	50L	3KW	0-3500rpm/min	0.75Kw	0-60r/m	2750	2100	1900	2600
APKZRJ -100	100L	3KW	0-3500rpm/min	1.5kw	0-60r/m	2800	2150	2100	2800
APKZRJ -200	200L	4KW	0-3500rpm/min	1.5kw	0-60r/m	2850	2200	2200	3100
APKZRJ -300	300L	5KW	0-3500rpm/min	2.2kw	0-60r/m	3000	2600	2500	3550
APKZRJ -500	500L	7.5KW	0-3500rpm/min	2.2kw	0-60r/m	3800	2800	2700	3950
APKZRJ -750	750L	11KW	0-3500rpm/min	3.7kw	0-60r/m	3900	3900	2900	4400
APKZRJ -1000	1000L	11KW	0-3500rpm/min	3.7kw	0-60r/m	3900	3400	3150	4550
APKZRJ -2000	2000L	22KW	0-3500rpm/min	7.5kw	0-60r/m	4850	4300	3600	

<b>Electric components</b>		
Name	Company or Country	Brand
Screen	Taiwan	Siemens
Module	Germany	Siemens
Power supply	Taiwan	Schneider
Transducer	Taiwan	Schneider
Relay	Japan	Schneider
Heating protection	France	Schneider
Contractor	France	Schneider
Breaker	France	Schneider
Breaker	France	Schneider
Directional light	France	Schneider
Switch	France	Schneider
Button	France	Schneider
Switch of product inlet	France	Schneider
Contractor	France	Schneider
Speedy electrical	Switzerland	ABB

machine		
Slow electrical machine	Taiwan	ChengGang
CPU mainframe	Germany	Siemens



<b>Spare parts</b>				
Item	Product name	Specification	QTY	
1	Pipe sealing	DN25	3	
2	Pipe sealing	DN38	3	
3	Pipes sealing	DN50	2	
4	Butterfly valve		1	
5	Manhole sealing		1	
6	Ball valve	DN38	1	
7	Pipe connection	DN25	2	
8	Pipe connection	DN38	2	
9	Pipe connection	DN50	2	

PRODUCTION ROOM:



INSTALL PICTURE:





IN INDONESIA



IN BANGLADESH





IN UKRAINE:



IN BANGLADESH



IN INDONESIA



IN CHINA



IN SPAIN:





FINISH PRODUCT:





