

NJP-800

Automatic Capsule Filling Machine



Suitable for filling #000-#5 capsules A-E type;

It can fill different kinds of materials such as powder, granules, pellets, pills, etc; PLC control, filling dosage is easy to adjust;

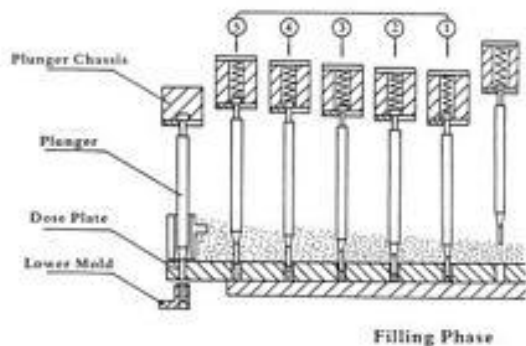
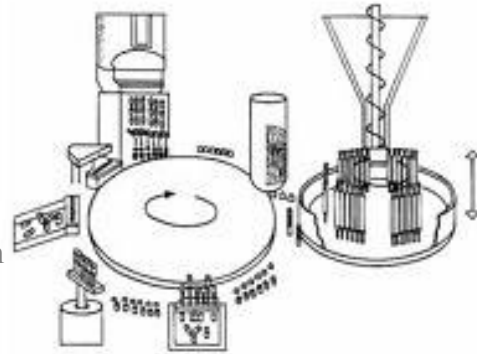
Easy to operate, the powder contact parts made by SUS316 stainless steel, meet GMP.



Working principle

Working Step

The ten-station rotary working table is operated intermittently by the index box transmission; It can loading the empty capsules into the mold, separating the cap, filling, rejecting the waste bag, locking, outputting the finished capsules, and cleaning the mold holes are performed in turn. Reserve station can install different material feeders.

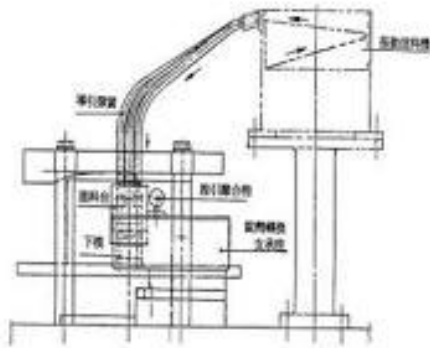
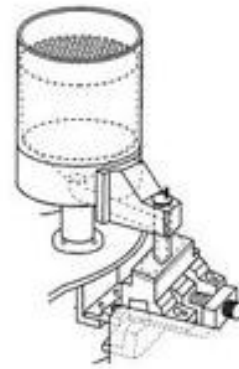


Powder Filling Station

The powder is pressed into the dosage plate by five filling rod. The filling depth is based on the powder property, the filling dosage is accurate over than 97%.

Pellet Filling Device

Dose plate reciprocating movement, using the principle of volumetric measurement, the dose plate groove content can be adjusted, the dose adjustment is convenient, accurate filling volume.



Pill Filling Device

The pill is fed by vibration feeder and flow into the groove content, when capsule body mold moved under the groove, the pusher push the pills into the capsule body. It can fill 1-3 pills with other different granule, powder or pellet material.

Machine Details



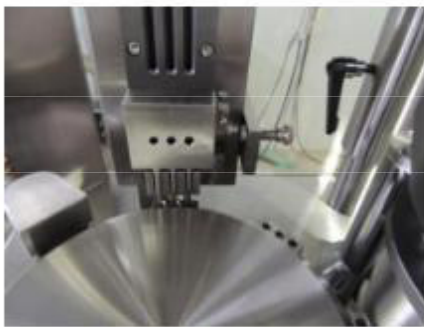
Machine



Working Table



Powder Filling



Capsule Loading Station



Pellet Filling Device

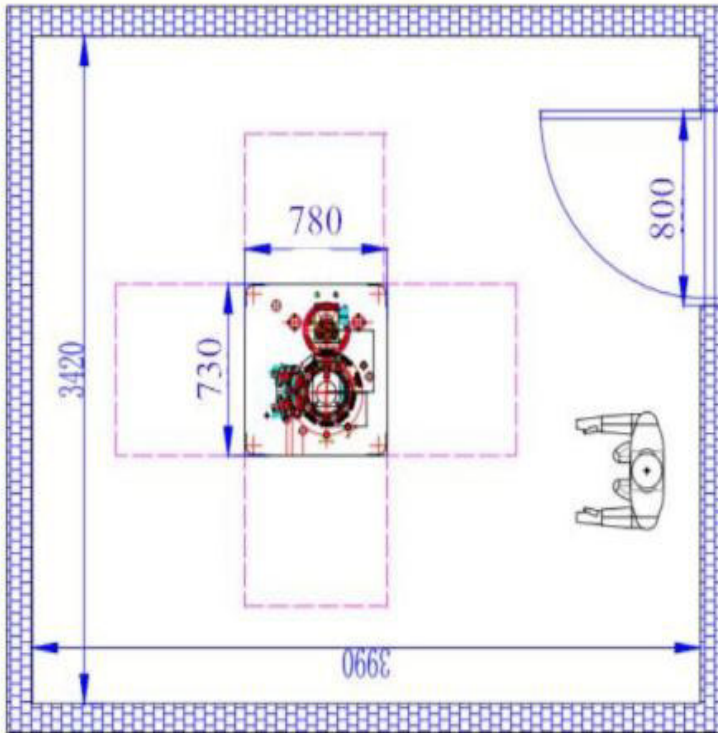


Polytetrafluoroethylene Filling Rod

Main Technical Specification:

Output	48000pcs/h
Weight	800Kg
Machine Dimension	930x790x1930
Motor Supply	380/220V 50Hz
Total Power	4.9 KW
No.of segment bores	6
vacuum	20m ³ /h-0.04-0.08Mpa
Dust suction	17.6Kpa 180m ³ /h
Noise	<80DB(A)
capsule qualified	Empty capsule 99.9% full capsule 99.9% more
Suitable for Capsule	00,0,1,2,3,4,5#
Filling error	± 3%- ± 4%

Room Size Requests



Equipped List

Main Packing List

Name	QTY
NJP-800 Automatic Capsule Filler	1
Machine free size mold	1
Dust collector	1
Manual book/ IQ, OQ, PQ	1
Quality certificate	1
Tooling box with tooling	1



Machine



Dust Collector



Water Pump



Tooling Box

Main Electronic List



NAME	Model	ORGIN	QTY
Exactitude intermission graduator	Ru83DS-10-150-2R-S2-V-SSS Ru83DS-06-120-2L-S1-V-SSS	Shandong	1
main machine	2HP-1500W	taibang	1
vacuum pump	SZ-1.5	Shanghai	1
cleaner	2.2KW	zhejiang china	1
Man-machine interface	TK6070Hi	WEINVIEW	1
PLC	DVP14E	AirTAC	1
transducer	VFD015B21A	AirTAC	1
light axis	DKNΦ20-40	Japan	1
beeline axletree	SDE40Y	Japan	4
beeline axletree	SDE20Y	Japan	8
beeline axletree	SDE16Y	Japan	10
beeline axletree	SDE12Y	Japan	18
roll-pin axletree	IKDCF18	Japan	1
roll-pin axletree	IKDCF12	Japan	5
hot relay	NR2-25	China	3
relay	CJX2-25	China	1
relay	CJX2-12	China	3
breaker	DZ47-60-C32	China	1
breaker	DZ47-60-C15	China	1
breaker	DZ47-60-C10	China	1
sensor	LJC30A-H-Z/AB2	Shanghai, China	1

NJP-1200

Automatic Capsule Filling Machine



Features

NJP-1200 full-automatic capsule filling machine is a new type of capsule filling machine made in China and absorbed advanced technology from abroad. It has been improved and innovated many times to make the machine beautiful, easy to operate and superior in performance. It has passed the CE standard certification of the European Union and is welcomed and purchased by domestic and foreign customers.

- 1、 The combination of RU110 and RU80 high precision indexing box was adopted to improve stability and service life.
- 2, adopt the second generation totally enclosed turntable design. The upper die adopts two shafts to move up and down circumferentially, and imported silica gel seals to reduce the powder feeding into and out of the rotary table; the lower die adopts two shafts to move in and out circumferentially, matched with imported rubber seals to reduce the situation of powder feeding due to the back and forth expansion of the moving shaft, and it is stable and has high precision; the double shafts are made of a press cover, easy to disassemble and assemble, easy to clean, and the sealing ring is not changed. It is necessary to turn on the turntable to avoid cumbersome defects due to the dismantling of the turntable.
- 3、 It adopts three dimensional control elements; and takes the undersurface plane of dosage as base, so as to eliminate the natural transmutation of the dosing disc and copper saucer, it is uniformity in interval and guarantees the accurate of filling weight, decreasing the phenomena of powder leak and dasy to clean, it' s the special design at design at domestic (Patent Number 20042006795X).
- 4、 It adopts capsule vacuum positioning machanism to make the capsule qualified over 98%.
- 5、 Add the extra function of Capsule control switch.(Control the capsule outside of the machine: it' s more safely and quickly).
- 6、 Add the JOG control system,it' s easier to operate and clean the machine.
- 7、 The modular closed powder filling mechanism is adopted, which is easy to assemble and disassemble and easy to clean.
- 8、 Adopting 7 inch color LCD screen, it can alarm automatically when it is short of capsule, powder, vacuum fault, loosening of machine door, etc.
- 9、 The secondary dehumidification device of humidity in filling room was installed to solve the problem of poor dehumidification effect of filling workshop system and the operator's physical endurance limit.
- 10、 The mold cleaning and blowing structure is added to solve the problem that the capsule is difficult to pull out because of the deposition of strong adhesive powder in the mold plane and cavity during production, and the probability of capsule loading is greatly improved.(selection).

Technical parameters of NJP1200C automatic capsule filling machine

Output	72000 pcs / hour
Machine weight	1000kg
Machine Dimensions	870(+339)mm*940(+339)mm*2000mm
Power Supply	380/220V 50Hz
Motor power	1.6KW
No.of segment bores	9
Vacuum	48m ³ /h -0.03~-0.05Mpa
Dust	20Kpa 210m ³ /h
Noise	<80DB (A)
Making rate	empty capsule: 99% ; filled capsule : above 98%
Suitable for Capsule	000、00、0, 1, 2, 3, 4、5#
Filling error	±2.5%-±3.5%

Main Electrical Apparatus Element List of NJP-1200C

Name	Specifications type	Qty	Manufacturer
Touching-screen	SMART-700 IE V3 7INCH	1	Siemens
PLC program control/PLC	CPU222 8 in 6 out	1	Siemens
Expanding Model	Em232	1	Siemens
Switch Power Supply	S8FS-C03524	1	Japan Omron
AC Contactor	CJX1-12/22	2	China
Middle Relay	MY4N-GS24VDV	5	Japan Omron
Air Switch	NXB-63ZC6NXB- 63ZC32	2	Chint
Frequency Transducer	SINAMICS V20	1	Siemens
Main Motor	R37DRS90M4/2W	1	Germany SEW
Bearing	EASE IKO	122	Japan
Vacuum Pump	SK siries	1	China
Dust Collector	EDC siries	1	Made by ourselves
High Precision Cam Index Unit	110DF-10-15080DF-06	11	Taiwan HANDEX
Material station detector	TSA-30M-25NB	1	China
Sectionalizer	DZ108-20	2	Chint

The parts and tooling together with machine

Code	Specification	Unit	Quantity	Remark
1	Vacuum pump	Piece	1	Installed inside the machine
2	Dust collector	Piece	1	
3	Rectifying rod	Piece	4	Special purpose part
4	Cleaning Pad	Piece	2	Used for cleaning
5	Adjustable Spanner (5-12)	Set	1	
6	Powder Hopper	Piece	1	Special purpose part
7	Cleaning Brush	Piece	5	Special purpose part
8	Screwdriver (10 inch)	Piece	2	
9	Oiler	Piece	1	
10	Special Screwdriver (12 inch)	Piece	1	
11	Cleaning Needle	Piece	2	Special purpose part
12	Plug Gauge	Piece	1	
13	Cashing Spanner	Set	1	Special purpose part
14	Spanner (5-19)	Set	1	
15	Plastic soft tube	Piece	2	Necessary accessories

List of Small Parts

Item	Specification	Quantity	Remark
Pressure spring	$\Phi 1.8 \times \Phi 10 \times 37$	10	
Pressure spring	$\Phi 1.5 \times \Phi 13 \times 60$	10	
Retaining spring		2	
Pressure spring	$\Phi 1.5 \times \Phi 12 \times 21$	2	
Draw spring	$\Phi 3 \times \Phi 20 \times 250$	1	
Draw spring	$\Phi 3 \times \Phi 20 \times 300$	1	
Draw spring	$\Phi 3 \times \Phi 20 \times 280$	1	
Draw spring	$\Phi 3 \times \Phi 20 \times 330$	1	
Draw spring	$\Phi 3 \times \Phi 20 \times 123$	1	
Seal Ring	$\Phi 12$	2	
Seal Ring	$\Phi 20$	4	
Seal Ring	$\Phi 30$	2	